

# Installing the Amzi Prolog Plugin<sup>1,2</sup>



by David Scuse

Department of Computer Science, University of Manitoba, Winnipeg, Manitoba, Canada

Last revised: October 27, 2003

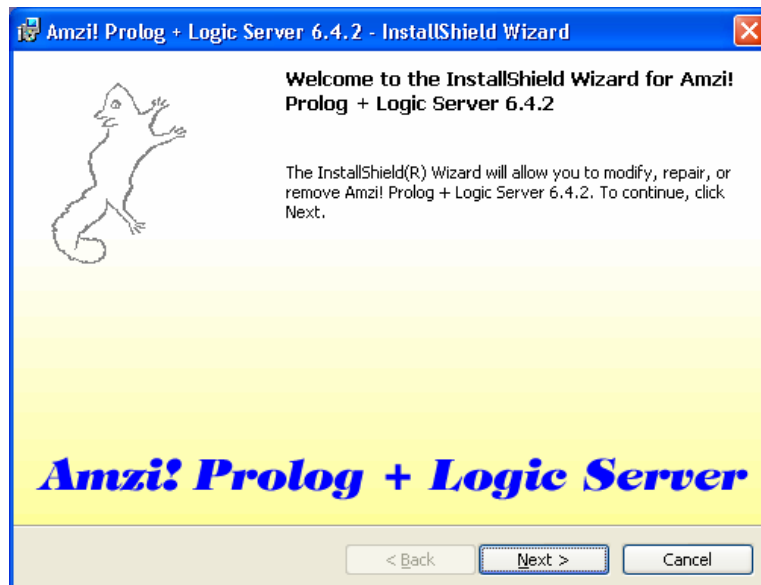
## Overview:

In this tutorial, we describe the installation of Amzi Prolog ([www.amzi.com](http://www.amzi.com)) which now runs as an Eclipse plugin.

## Amzi Prolog:

To begin, download the current version of Amzi Prolog from the Amzi site ([www.amzi.com](http://www.amzi.com)). In order to use the Amzi Prolog plugin, the Java JRE 1.4.1 and Eclipse 2.1 must be installed. See Tutorial 1 if you do not have Eclipse installed yet.

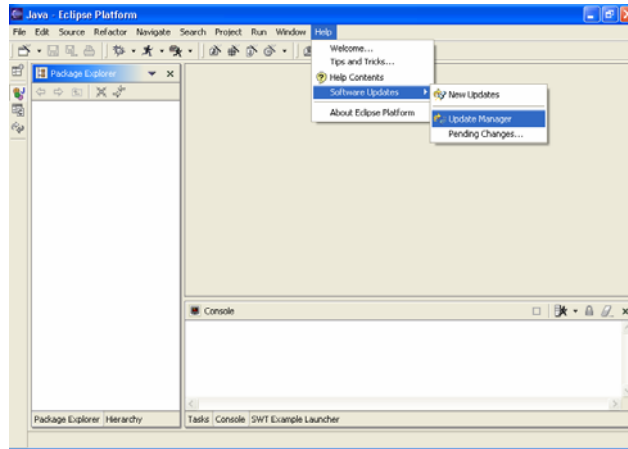
Run the Amzi install exe file and the following window should be displayed.



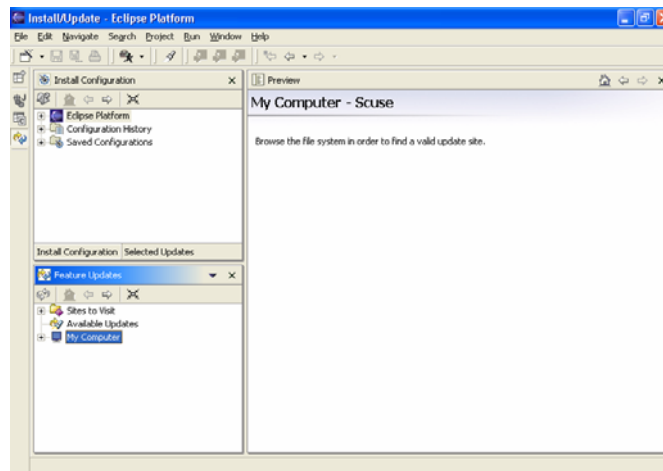
<sup>1</sup> This work was funded by an IBM Eclipse Innovation Grant.

<sup>2</sup> © David Scuse

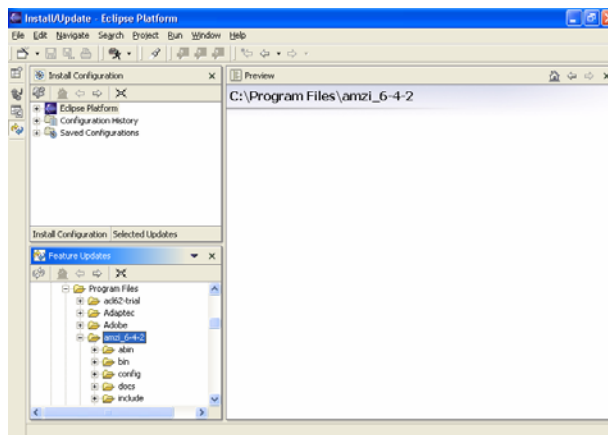
Once the installation is complete, launch Eclipse. Then run the Update Manager (from Help → Software Updates).



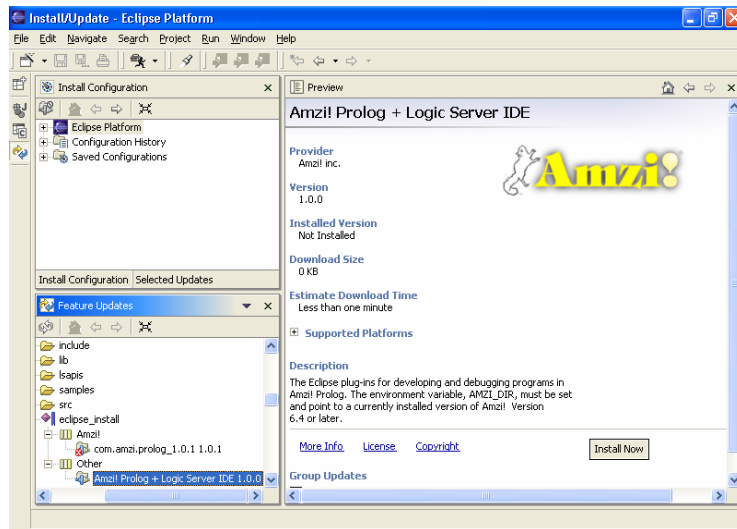
In the Feature Updates pane (in the bottom left corner), select My Computer and expand the node by clicking on the + sign.



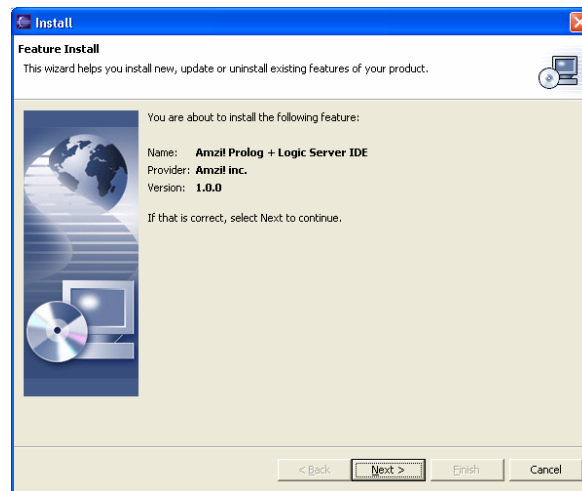
Navigate to the directory in which Amzi was installed:



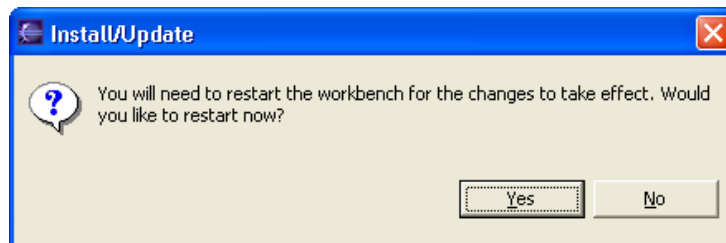
Then continue navigating until to the eclipse\_install directory and then to the Other directory. Expand Other and so that the entry Amzi Prolog + Logic Server IDE entry is visible.



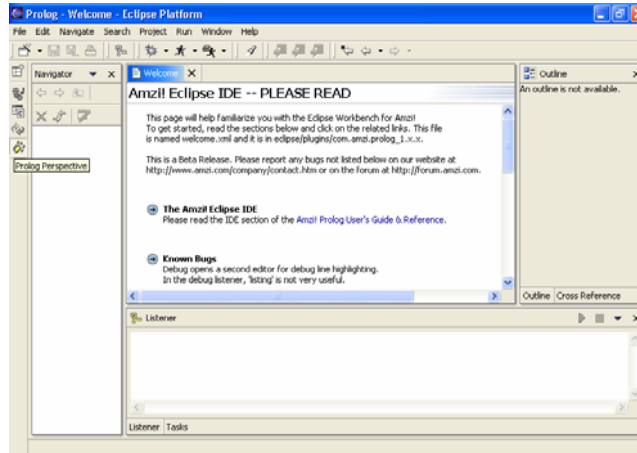
Click on the Install Now button at the bottom right side and the following window is displayed.



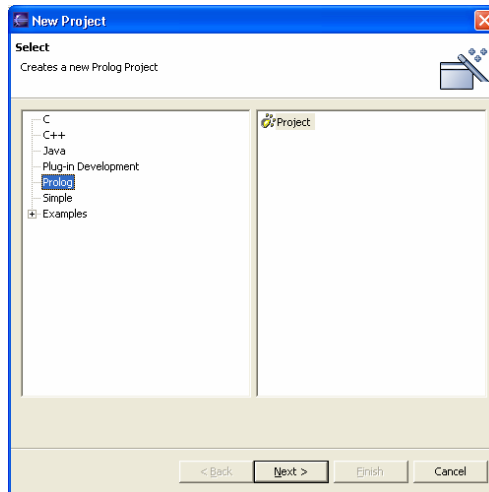
Complete the install process and then restart Eclipse.



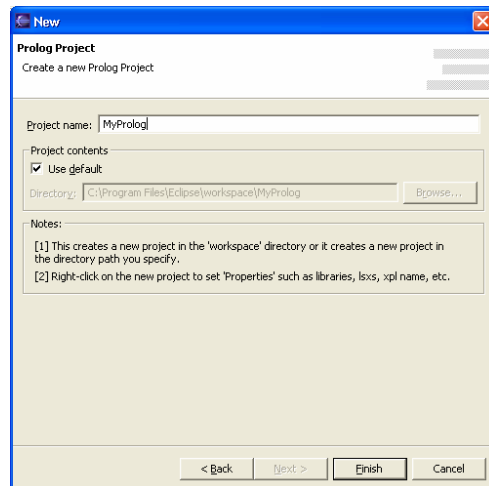
Note that a Prolog Perspective is now visible.



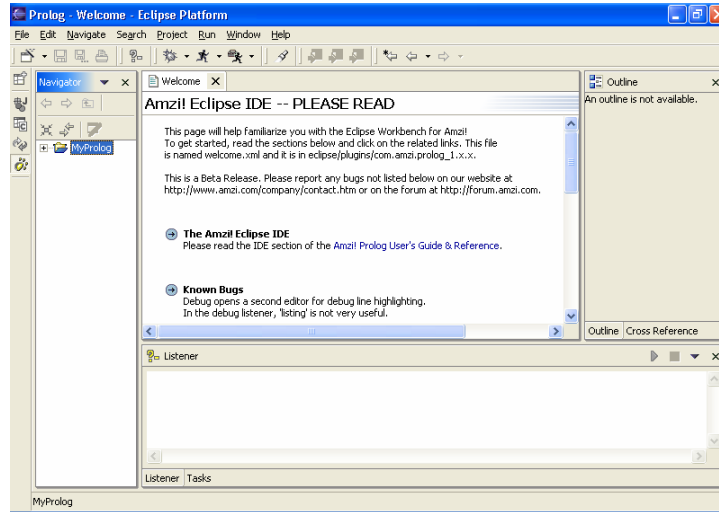
To create a new Prolog project, select File → New.



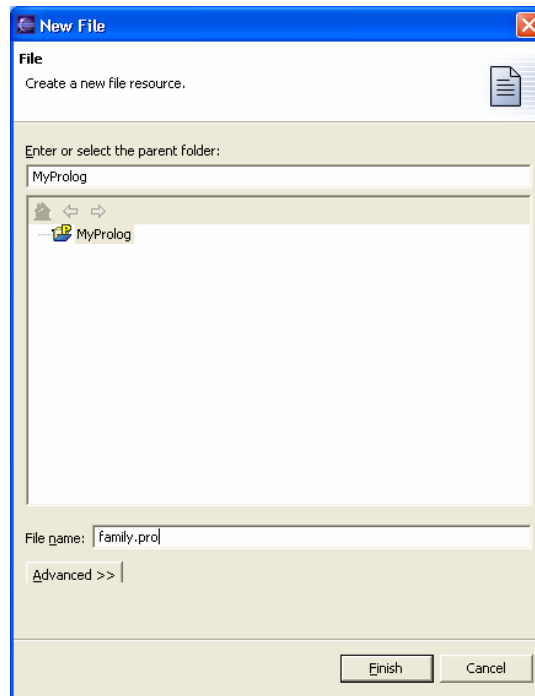
Select Prolog and click on the Next button.



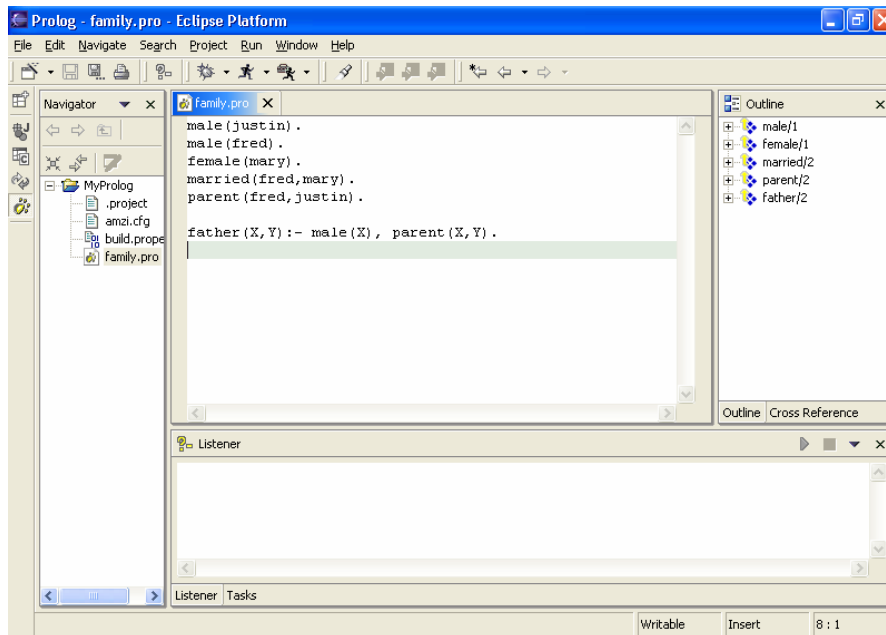
Enter the project's name and click on Finish.



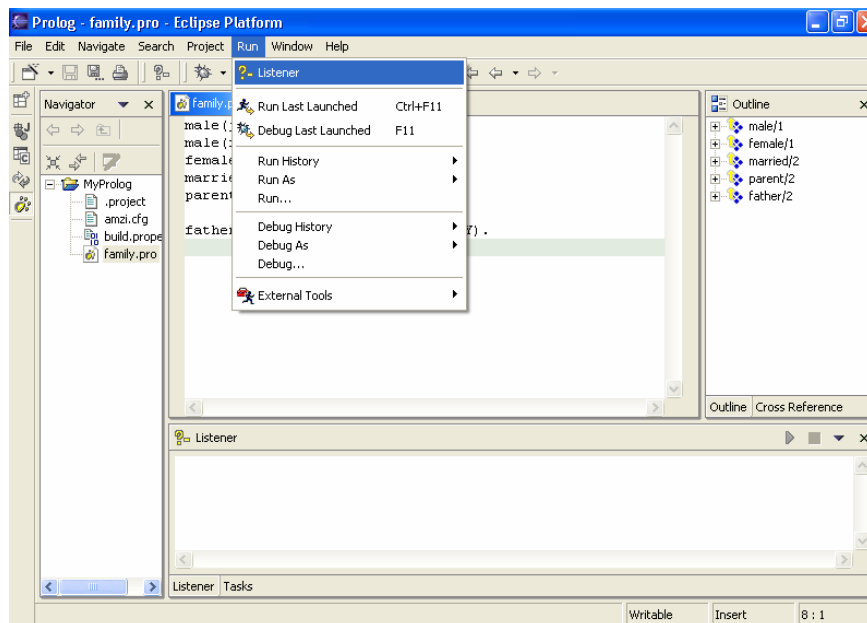
Right-click on the project name and select New → File. Enter the name of the Prolog source file. Then, click on the Finish button.

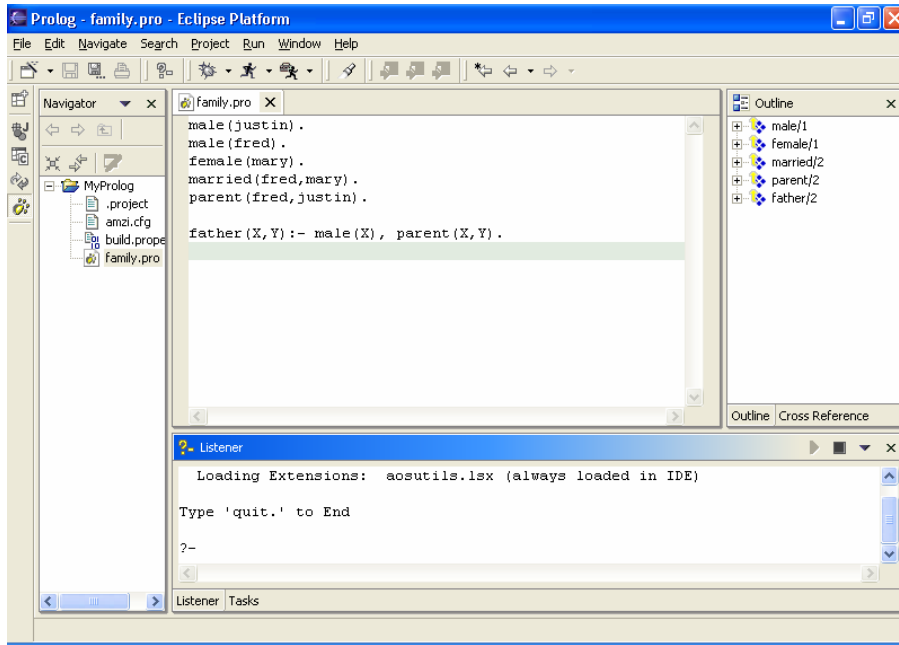


You can now enter your Prolog source statements into the Prolog file. Remember to save the file before attempting to use it.



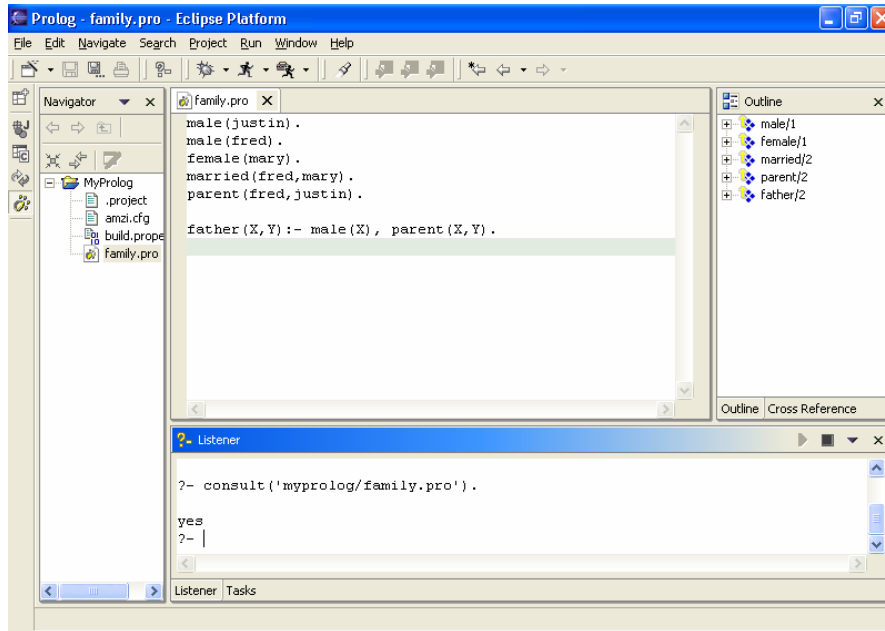
We will now take a look at a simple mechanism for running the Prolog program. (Later, we will take a look at a slightly nicer method of starting a Listener and consulting file.) To create a Listener window, select Run → Listener.



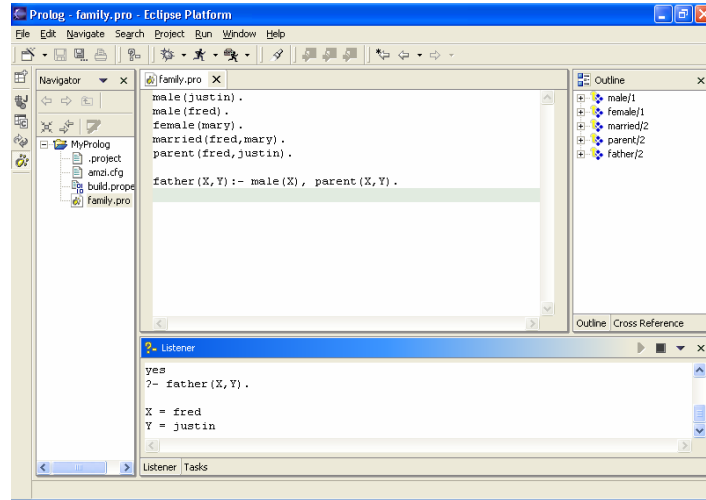


You can “consult” the file into Prolog using the statement:

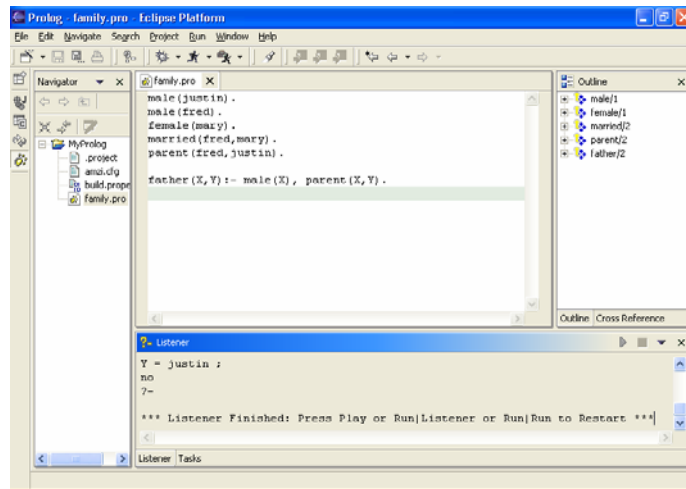
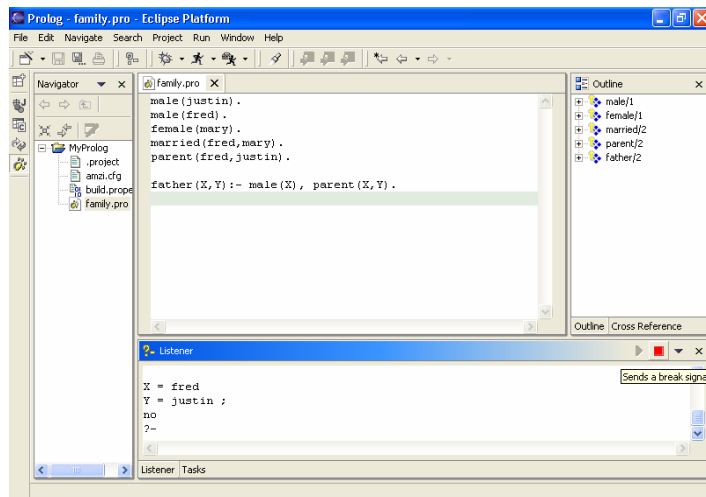
```
consult('myprolog/family.pro').
```



You can now query the knowledge using standard Prolog queries.

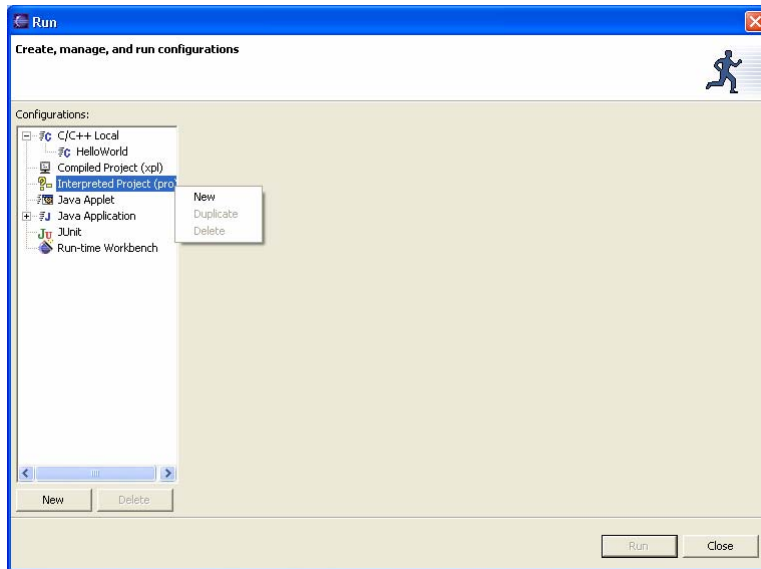


To terminate the Listener, click on the red icon in the top right corner of the listener.

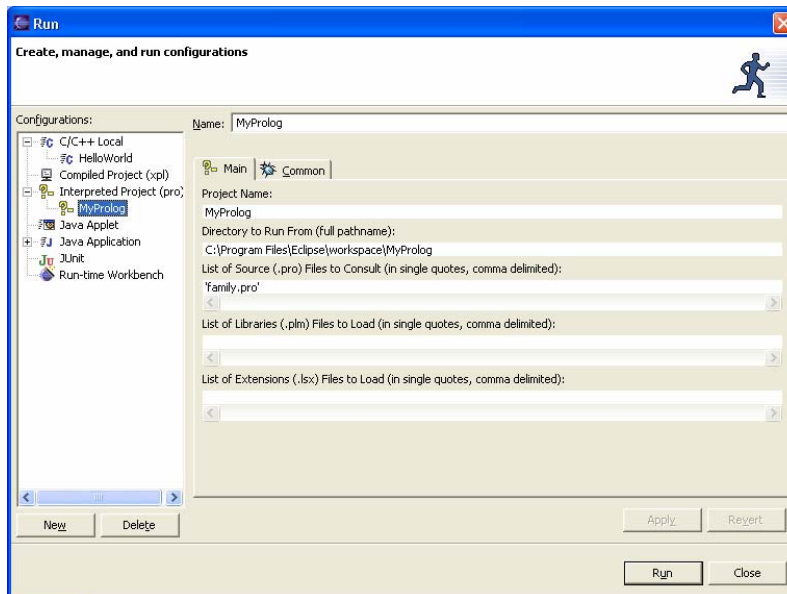




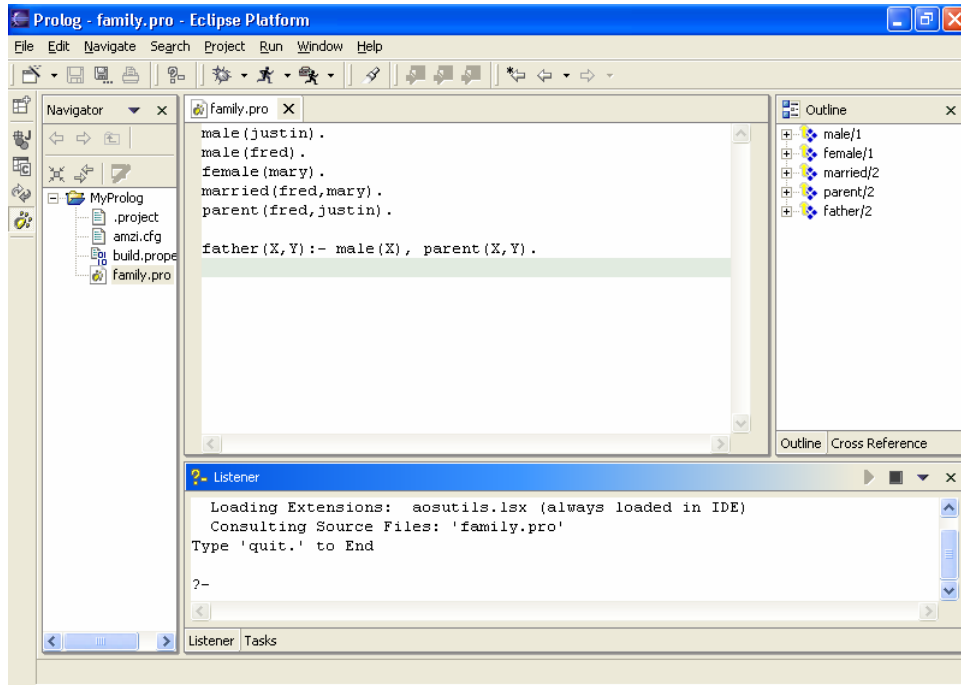
Having to consult the Prolog source file into the Listener each time the Listener is started is annoying if you are constantly making changes to the source file. An alternative method is to create a Run command to launch the Listener and consult the file in one operation. First, select Run → Run to bring up a Run window. Select Interpreted Project → New.



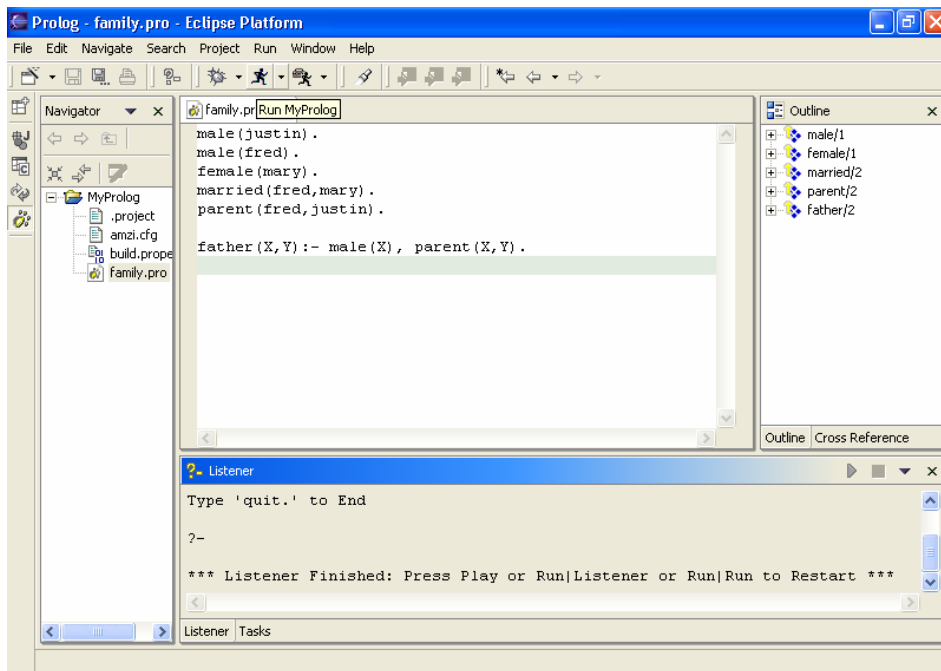
All of the necessary entries should already have been filled in.



Click the Run button to run the Listener. As shown below, note that the source file has already been consulted into the Listener.



After terminating the Listener, the Run button can be used to start the Listener again.



You can now develop Prolog programs that use the Eclipse IDE and the Amzi Prolog compiler.